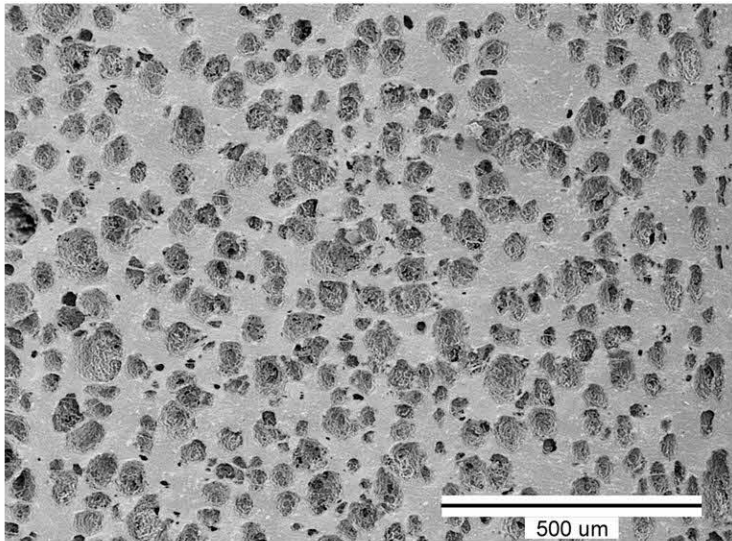
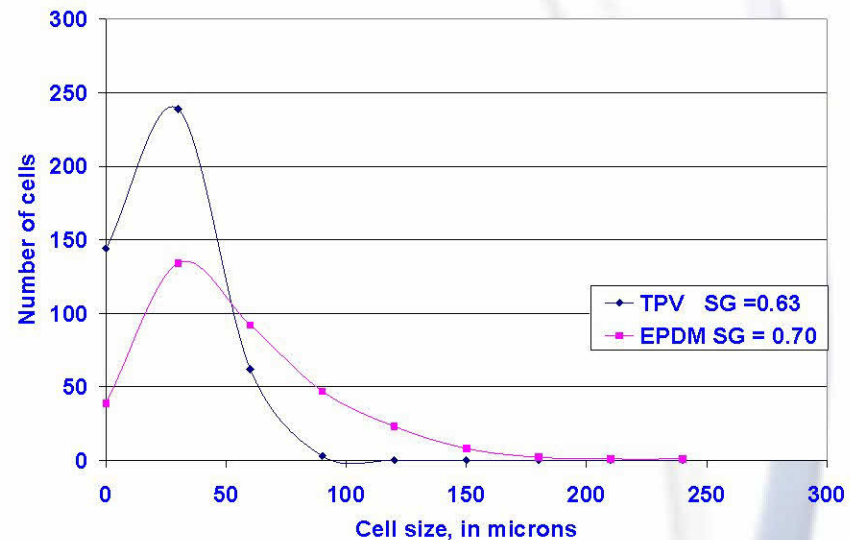


# MuCell® system provides the ability to foam a TPV like an EPDM



Cell Size Distribution in Foamed Profile Section  
Comparison TPV (N<sub>2</sub>) vs. EPDM at similar expansion ratio



N<sub>2</sub> foamed TPV shows a similar cell morphology to chemically blown EPDM

- Cell size ~40 to 70 μm
- Cell density ~ 70 to 100 cell / mm<sup>2</sup>
- Slightly narrower cell distribution